

## New student reps elected

### University Governance

In October, undergraduate students (both part-time and full-time) elected new representatives on important university decision-making bodies.

Stefan Lozinski was elected as the undergraduate representative on the Board of Governors.

Muntasir Saffie (Engineering) and Eric Siu (Science) were elected to two-year terms on Senate. They join Ting Zhong (Business), Amandeep Rai (Health Sciences), Sarah Iori (Humanities) and Nitin Anand (Social Sciences) who are in the second year of their two-year terms on Senate.

Alexander Caudarella is in the second year of his term as the undergraduate representative on the University Planning Committee and University Budget Committee.

These students represent both part-time and full-time undergraduate students in their roles. Decisions on the allocation of resources by the University (by the Board of Governors) and academic programs (Senate) are critical to the quality of our educational experience. If you have a concern or want further information, don't hesitate to contact these representatives through the MAPS Office.

## MSU Awards

### Call for nominations

The McMaster Students Union (MSU) presents several awards each year to individuals and groups to recognize excellence at McMaster. Part-time students are eligible for a number of these awards.

The Rudy Heinzl Award of Excellence has been presented annually since 1997 in recognition of an outstanding one-year achievement that improves the lives of McMaster students. Any member of the campus community (students, staff, faculty and alumni) may be nominated.

The J. Lynn Watson Award for Community Service recognizes the McMaster campus group that has made the greatest contribution to charitable giving.

The MSU Spirit Award recognizes the campus group that has demonstrated superior spirit throughout the academic year.

Nomination forms are available at <http://www.msu.mcmaster.ca/> awards, at the Compass Service Desk, or the MSU Main Office (MUSC 201). The deadline for nominations is March 3, 2006. Any member of the McMaster community may nominate individuals or groups. Further information is available from MSU Speaker Joshua Dauphinee ([speaker@msu.mcmaster.ca](mailto:speaker@msu.mcmaster.ca)).

### McMaster Association of Part-Time Students

McMaster University Student Centre  
Room 234  
McMaster University  
Hamilton, ON, L8S 4S4

**Phone:** (905) 525-9140 x22021

**Facsimile:** (905) 524-1111

[maps@mcmaster.ca](mailto:maps@mcmaster.ca)

#### Office Hours:

Monday – Thursday, 9:30 am – 8:30 pm

Fridays, 9:30 am – 2:00 pm

#### MAPS Full-Time Staff:

Sam Minniti, Executive Director

Josephine Taylor, Office Administrator

#### MAPS Board of Directors

**President:** Carole Armstrong

**Vice President (Internal):** Anna Marinelli

**Executive Councillor:** Susan Black

**Executive Councillor:** David Moore

**Board Members at Large:** Denise Ellis,

Min-Ju Evans, Kori Garret, Jesse Jeffrey,

Rose O'Connor, Reneé O'Reilly, Sean Spratt



# WE Link

Volume 28, Number 2 February 2006

## University seeks 84% increase in part-time student ancillary fees

McMaster University has proposed an 84% increase in ancillary fees payable by part-time degree students as part of a major overhaul of the way non-tuition fees are assessed.

The proposal, part of a draft report by the University Fees Committee, was given to MAPS, the McMaster Students Union (MSU) and the Graduate Students Association (GSA) on December 14. Fees payable by MAPS members would increase under the proposal from the current \$10.28 per academic unit to a projected \$18.93 per unit.

"We have made it clear to the University that MAPS opposes the increases as proposed," says MAPS president Carole Armstrong.

In its draft report, the University Fees Committee recommends eliminating MAPS' membership fee and requiring that part-time students pay all ancillary fees currently payable by MSU members, including the MSU membership fee. This would include building fund fees for the new athletics building and the student centre, as well as fees for departments such as Student Health Services that part-time students don't typically use.

MAPS members have already paid \$500,000 through a five-year fee commitment (1997-2002) to support the construction of the MUSC.

"The University talks about achieving greater 'equity' between what full-time and part-time students pay, but it amounts to part-time students subsidizing services and commitments of full-time students," explains MAPS executive director Sam Minniti.

"The University doesn't seem to appreciate that MAPS and the MSU represent very different constituencies. A merger isn't in the interest of either organization's members."

MAPS is working with the other senior order student governments at McMaster (MSU, GSA, and MBA Association) to submit a joint response to the University. Under provincial government policy, the consent of student governments is required for increases to ancillary fees (either new fees or increases to existing fees).

The proposal was prepared by the University Fees Committee, a body on which there is no student representation, without early consultation with affected student governments.

### Have your opinion heard

Part-time students are encouraged to send their views to the MAPS Office ([maps@mcmaster.ca](mailto:maps@mcmaster.ca)) so that they may be reflected in MAPS' discussions with the University and other McMaster student governments.

## Celebrating Excellence



University president Peter George and Martin W. Johns Award recipient Ruth Nicholson at the 21st annual MAPS Awards Dinner (see pages 4-6).

# DON'T FORGET

**The McMaster Association of Part-Time Students (MAPS) Annual General Meeting (AGM) will be held on Tuesday February 28th at 5:30 pm in the CIBC Hall (MUSC 308/309).**

\*In the event McMaster is closed (possibly due to inclement weather), the MAPS AGM will be held on Friday March 3rd at 5:30pm in MUSC 311/313



Questions? Contact Sam Minniti at x23884

## MAPS appoints new executive director



**“MAPS has an integral role on campus as a committed stakeholder in student governance”**

Long-time McMaster student advocate Sam Minniti has been appointed the new executive director of the McMaster Association of Part-Time Students (MAPS).

In his new role, Sam leads MAPS' advocacy work with campus partners, levels of government, and has a key role in stakeholder communications. His appointment, which was effective November 28, concluded an extensive national search that attracted more than 50 candidates from across Canada.

“The selection process was challenging because of the high quality of the candidates,” said Carole Armstrong, MAPS president. “Sam emerged from the process as the ideal choice to provide strategic leadership as we enter an important new phase in MAPS' work on behalf of part-time students.”

Sam is well known at McMaster and has an impressive background in university and student governance, advocacy, post-secondary education policy, and program delivery. Formerly a program coordinator with the Centre for Student Development, he is a past president of the McMaster Students Union, a former member of the University Planning Committee, and a former assistant to a federal Cabinet minister.

“MAPS has an integral role on campus as a committed stakeholder in student governance,” Sam says. “I am excited to do my part in enhancing the quality of part-time students' experience at McMaster.”

Sam holds two degrees from McMaster: a Bachelor of Science in Life Sciences (2003) and a Bachelor of Arts in Political Science (*summa cum laude*, 2004). He is also the recipient of several awards for leadership, including the President's Award of Excellence from the University, admission to the McMaster Honour Society from the McMaster Students Union, and the Queen's Golden Jubilee Medal from the Government of Canada.

## MAPS responds to *Refining Directions*

Following the revision to McMaster University's strategic planning document, *Refining Directions*, MAPS was invited by the University to comment on the report and implementation of 'next steps.' MAPS' then-executive director, in collaboration with the director of CCE and faculty, made a detailed written submission – *McMaster University: Leadership in Lifelong Learning*.

The authors identified an erosion of services for part-time students. While *Refining Directions* talks about life-long learning, the part-time student – an inevitable facet of such a priority – is getting less support. This is especially true in the Registrar's Office which has eliminated a position that was once dedicated for providing guidance to both prospective and current part-time students. As a result, the MAPS office is experiencing a substantial increase in students seeking assistance that would formerly have been addressed by the Registrar's Office.

MAPS will not abandon these students. We will be pressing the University to reinstate the supports that have been cut.

## MAPS-MSU membership transferability

Some part-time undergraduate students, who are registered with the University as having disabilities, seek to benefit from a broad range of entitlements currently enjoyed by full-time students. Such entitlements include but are not limited to financial support offered by the University to full-time students, and membership/voting rights in the McMaster Students Union.

Degree students at McMaster are represented by MAPS (17 and fewer units) and the McMaster Students Union (18 or more units). The MSU has proposed that students with disabilities, who are registered in 12-17 units in an academic session, be permitted to transfer their membership from MAPS to the MSU.

MAPS has suggested that as a matter of equitable treatment, students in both MAPS and the MSU should have an option to transfer their membership to their preferred organization. This is not a new idea; two-way membership transferability was proposed by the MSU in July 1985. Discussions between MAPS and the MSU are continuing with the hope of having some degree of membership transferability in place for September 2006.



## Higher education as public priority

In the weeks and months that led up to the federal election, the media bombarded the public with opinions and analysis on health care, the economy, the environment and a host of other issues. As part-time students we also have a major stake in another issue – higher education.

Funding to universities, tuition levels (including potential deregulation of tuition for more academic programs), and student financial aid are all policies that the provincial government has a major if not decisive role in determining ...but the federal government also has a major role.

It is the national government that funds Canada Student Loans, overhead costs for research, and crucially important transfer payments to provincial governments. The decisions made by our representatives in Parliament therefore have an impact on two fundamental issues for part-time students: affordability of access and the quality of the education delivered.

This means affordable tuition – or adequate levels of financial aid for those who truly need it, not just those who meet arbitrary government or institutional definitions. It also means instructors, class sizes and physical facilities (classes, labs, libraries, support services) that support a high quality educational experience.

The Government of Ontario, under Premier Dalton McGuinty, has signaled its intention to invest \$6.2 billion over the next few years to fund program enhancements. While laudable, this funding will not address the existing needs in relation to faculty renewal, TAs, class size, library acquisitions, deferred maintenance, and all the other elements that are a part of our education.

Speaking up for accessibility and quality starts with telling election campaign canvassers that higher education is a priority, but it doesn't end there. The new federal government will govern with a minority in the House of Commons, meaning that the politicians will be more receptive to our concerns. Keep the pressure on your local MP and the Prime Minister, in addition to your local MPP and the Premier. The quality of our education may depend on it.

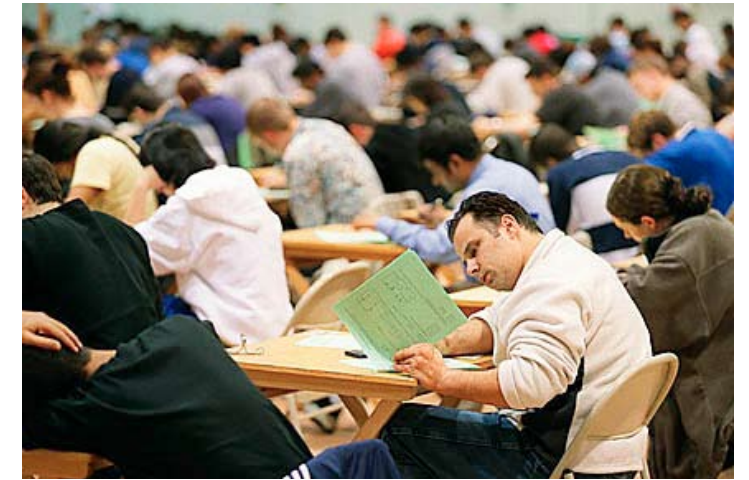
## Appreciation

MAPS bade farewell to two long-time staff members in 2005.


Jackie Osterman left in September to return to her first love, academic counseling, in a position with the Faculty of Humanities. During her more than five years as MAPS' executive director, her support for the board and passionate commitment made her a well-known advocate for the needs of part-time students.

Tina Puchalski departed in late November after more than four years with MAPS as our office's administrative assistant. She led production of MAPS' publications and supported MAPS' broad program of other activities.

MAPS is grateful to Jackie & Tina for their service and we wish them all the best.



**“As part-time students we also have a major stake in another issue – higher education.”**


  
**MAPS**

# MAPS AGM


McMASTER ASSOCIATION OF PART-TIME STUDENTS (MAPS)

## ANNUAL GENERAL MEETING


**TUESDAY FEBRUARY 28, 2006\***  
**CIBC HALL (MUSC 308/309)**  
**5:30 pm**



Nomination forms for election to the MAPS Board of Directors are available from Sam Minniti, MAPS Executive Director, in the MAPS Office (MUSC 234)



Nomination forms are due on:  
**Friday February 24th at 12:00 pm**



**Questions?** Contact Sam Minniti at x23884

\*In the event McMaster is closed (possibly due to inclement weather), the MAPS AGM will be held on Friday March 3rd at 5:30 pm in MUSC 311/313



**Above left:** MAPS vice-president (internal) Anna Marinelli with Centennial Award recipient Carolyn Green.

**Above right:** Anna Marinelli and MAPS Gold Medal recipient Jacqueline Shoreman.

## Awards dinner celebrates excellence

More than 100 part-time students and their guests were joined by faculty and senior officers of the University on December 2 at MAPS' Awards Dinner.

The event, the 21st annual dinner sponsored by MAPS in celebration of the hard work and achievement of part-time students, included the presentation of several awards and acknowledgement of recipients of University Scholarship.

The Martin W. Johns Award, MAPS' premiere award in recognition of exceptional commitment to part-time students, was presented by University president Peter George to Ruth Nicolson.

Like many part-time students, she returned to school as a mature student balancing family, work, and academic responsibilities. Her success has made her a role model for life-long learning.

She received her Honours Bachelor of Arts in Anthropology in June with first class standing and also received the J.E.L. Graham Medal as an outstanding member of the Social Sciences graduating class. She maintained Dean's Honour Roll standing throughout her academic studies and is a member of the Golden Key National Honour Society.

Ruth is a program manager at the Centre for Continuing Education (CCE). The award also recognized the special attention she is known to give students and her advocacy for new programmes that speak to the burgeoning interests of those who study through CCE.

## Gold Medal

Jacqueline Shoreman was acknowledged as the recipient of the MAPS Gold Medal. Presented to the graduating student completing studies primarily on a part-time basis and who attains the highest Cumulative Average, the English and Social Work grad received the medal from the University Chancellor at convocation in June.

## Centennial Award

MAPS' Centennial Award, recognizing a part-time student who has overcome particularly adverse circumstances to pursue higher education or who contributes to the community, was presented to Carolyn Green.

She was recognized for her generosity in contributing her time and talents outside of the classroom. Each week, she teaches art lessons to children and works with homeless youth and young adults with substance abuse issues with genuine empathy. Carolyn is a graduate of the Addiction Studies diploma programme.

## MAPS/CCE Awards

The recipients of the MAPS/CCE Awards of Excellence, presented to the graduating student with the highest grade point average in each CCE programme, were: Claudia Amaral, Christina Cole, Nicole Doblec, Kar Fai-Kelvin Leung, Diana Parker, Tomislav Varga, and Cynthia Weeks.



## 2004-2005 AWARD WINNERS

### ANITA ADAMS

The University Scholarship

### CLAUDIA AMARAL

The CCE/MAPS Award of Excellence

### JOHN BENICH

The F.W. Waters Scholarship in Philosophy For Part-Time Students

### PEGGI BENNICI

The Jack Richardson Memorial Scholarship  
The William J. McCallion Scholarship

### DOUGLAS BREMNER

The University Scholarship

### CHRISTINA COLE

The CCE/MAPS Award of Excellence

### LORRAINE COOPER

The Cranston Prize

### LINDA CORMICK

The Alumni Association Scholarship  
The David Winch Memorial Scholarship

### NICOLE DOLBEC

The CCE/MAPS Award of Excellence

### MARK FINKELSTEIN

The Swiss Minister to Canada Book Prizes

### JOHN FROUD

The McMaster University Retirees Association Prize  
The William J. McCallion Scholarship

### KIMBERLY GORDON

The University Scholarship

### KARA GOURLEY

The Anne Stein Memorial Prize

### CAROLYN GREEN

The MAPS Centennial Award

### MARGARET HARTLEY

The Achievement Awards of Excellence

### ALEXIS HUGHES

The Achievement Awards of Excellence

### ELAINE HUJER

The Rand Memorial Prize of Class '98

### WENDY KOLODZIEJCZAK

The Corelene Helen Tostevin Scholarship  
The William J. McCallion Scholarship

### ELZBIETA KOPANSKA

The University Scholarship

### DEBORAH KUBICKI

The E.B. Ryan Scholarship

### KAROLYN LACROIX

The William J. McCallion Scholarship  
The Corelene Helen Tostevin Scholarship

### KIRK LAMPMAN

The University Scholarship

### MARY LANDRY

The University Scholarship  
The William J. McCallion Scholarship

### QUYEN LE

The Achievement Awards of Excellence  
The University Scholarship

### SU LEE

The Audrey Diemert Memorial Book Prize

### LEE LIPCSIK

The University Scholarship

### KAR FAI-KELVIN LEUNG

The CCE/MAPS Award of Excellence

**KEVIN MCHARG**

The University Scholarship  
The William J. McCallion Scholarship

**NANCY MEEHAN**

The University Scholarship

**MARTINA MYSICKA**

The Corelene Helen Tostevin Scholarship

**LYNN NICHOLSON**

The University Scholarship

**ANN PAMPLIN**

The University Scholarship

**DIANA PARKER**

The CCE/MAPS Award of Excellence

**VALERIE PROSSER**

The University Scholarship

**MASE RAPOSO**

The University Scholarship  
The William J. McCallion Scholarship

**HEATHER RENSHAW**

The University Scholarship

**MELANIE RYAN**

The Larry Sefton Scholarship  
The William J. McCallion Scholarship

**JACQUELINE SHOREMAN**

The MAPS Gold Medal

**RUSSELL SMITH**

Dofasco Award for Academic Excellence

**SHAWN SUMMERS**

The University Scholarship

**JUDITH SZUCS**

The Ralph Weekes Scholarship

**BENITA TOVSTIGA**

The University Scholarship  
The William J. McCallion Scholarship

**JANET VALLESI**

The University Scholarship

**TOMISLAV VARGA**

The CCE/MAPS Award of Excellence

**DIANE WALES**

The William J. McCallion Scholarship  
The University Prize for Special Achievement

**CYNTHIA WEEKS**

The CCE/MAPS Award of Excellence

**DAVID WHITLEY**

The University Scholarship

**FIONA WILSON**

The University Scholarship

**SUYU XU**

The University Scholarship



**Top:** Standing: Min-Ju Eveans, Dave Moore, Sean Spratt, Kori Garrett, Susan Black.  
**Seated:** Rose O'Connor, Anna Marinelli, Carole Armstrong, Elaine Marion.  
**Front:** Sam Minniti. Absent: Denise Ellis, Reneé O'Reilly.  
**Middle:** The Michael Schulte Band  
**Lower left:** University president Peter George.  
**Lower right:** MAPS president Carole Armstrong.

## The Latest from the Centre for Continuing Education (CCE)

Why not make 2006 the year you continue your education with CCE? Through the years, CCE has been the source for thousands of adult learners as they take our courses and programs for professional and/or personal interest. Most of our winter courses are now in full swing, but we do have new program initiatives and course offerings all the time, and the Spring/Summer 2006 semester is just around the corner. Check out our website at [www.mcmastercce.com](http://www.mcmastercce.com) for the latest news.

### Close to completing your degree?

#### Interested in continuing your education at a university level?

Build a career specific portfolio with the addition of specialized skills. The Centre for Continuing Education offers a variety of Certificate and Diploma programs to complement your degree: Accounting, Addiction Education, Business Analysis, Case Management, Certified Clinical Research Associate, Creative Writing, Family Mediation, Human Resources Management, Management Studies, Metallurgy of Iron and Steel, Police Studies and Web Design & Development. Visit our website at [www.mcmastercce.com](http://www.mcmastercce.com) or call (905) 525-9140 ext. 24321 for more information.

### The Stratford Theatre Seminars

Every year since 1960, the Centre for Continuing Education has conducted a seminar for theatre and Shakespeare enthusiasts, in association with the Stratford Festival. During the week, participants attend numerous productions, attend lectures and discussion sessions, learn about backstage and production activities, meet some of the Festival cast. 2006 Dates: July 10 - July 15 (open to public).

Weekday, weekend and weeklong packages available. This year's shows include: Henry IV, Part I, Harlem Duet, The Duchess of Malfi, South Pacific, The Glass Menagerie, London Assurance, Much Ado About Nothing, Oliver, Coriolanus. Contact Todd Rich at [richt@mcmaster.ca](mailto:richt@mcmaster.ca) or call 905-525-9140 x23128.

### Food, Wine & Love among the Vines

CCE will host this special creative writing workshop at Angel's Gate Winery in Beamsville. In this workshop students will discuss desire and how it relates to storytelling, develop the tools of sensual language as they are applied during a wine-tasting and luncheon and develop their own sensual writing styles through the developing of short pieces.

**Date:** Saturday, May 27, 2006

**Time:** 10:00 a.m. – 4:00 p.m.

**Location:** Angel's Gate Winery,  
4260 Mountainview Road, Beamsville

**Cost:** \$85.00 (workshop & lunch)

### FOCUS ON: Web Design & Development

Want to become a web master? There is great demand for knowledgeable and skilled Internet professionals who are skilled in the design, maintenance and programming of eye-catching and easy-to-navigate web sites. Get the tools you need in this comprehensive certificate/diploma program offering a hands-on approach in the fundamentals and theories of web design and development. Courses include: Building a Website; Intro to Web Graphics; Advanced Photoshop and Design; Animation for the Web and more. For more details on this program visit [www.mcmastercce.com/web](http://www.mcmastercce.com/web)

### Saturday Office Hours

To serve our students better, CCE is open during selected hours on Saturdays. Dates and hours are as follows: January 7 - May 6 (8:30 a.m. to 1:30 p.m.).

### Centre for Continuing Education

50 Main Street East - Downtown Centre, 2nd Floor  
905.525.9140 x24321, [conted@mcmaster.ca](mailto:conted@mcmaster.ca)  
[www.mcmastercce.com](http://www.mcmastercce.com)

## Call for applications

### Community Contribution Awards

McMaster University's Community Contribution Awards are presented in recognition of contribution to the University community and/or to the broader community-at-large.

The Gordon Raymond Award was established in 1996 by MAPS and other friends and colleagues in honour of Gord Raymond in recognition of his 27 years of service to McMaster University, including 15 years as Coordinator of Part-Time Degree Studies. It is awarded to the part-time student who, in the judgment of the selection committee, demonstrates enthusiasm for life-long learning and/or had an influence on the lives of part-time students.

Application forms and further information are available from the Office of Student Financial Aid and Scholarship (Gilmour Hall, Room 120). The deadline for applications is April 15, 2006.

## Parking Update

The McMaster University Board of Governors has approved construction of 300 spaces of underground parking beneath the new Ronald V. Joyce Stadium scheduled to be completed for the fall of 2007.

The new parking facility will help mitigate the loss of parking spaces in Zone 1 due to construction of the new Athletics & Recreation Centre and the new student residence.

The underground parking, which is projected to cost \$10 million, is to be financed by a new levy added to the cost of parking permits.